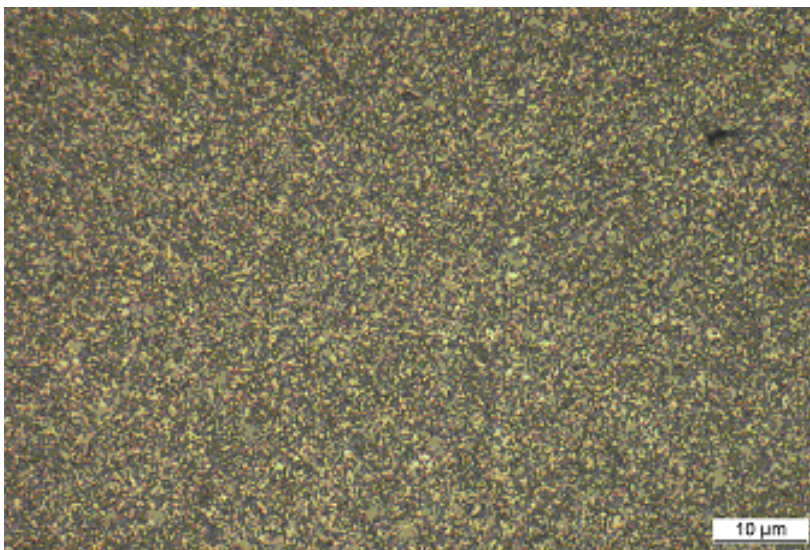


**Carbide grade: DK 460UF**

**Chemical Composition:**

WC 90,00 %

Co 10,00 %



**Physical Properties:**

Density [g/cm<sup>3</sup>]: 14,45 ± 0,20

(ISO 3369)

Coercive Force [kA/m]: 21,49 ± 2,79

(ISO 3326) [Oe]: 270 35

Magnetic Saturation [0.1μT·m<sup>3</sup>/kg]: 165 ± 10

Hardness (ISO 3878) HV30 [kg/mm<sup>2</sup>]: 1620 ± 50

Hardness (ISO 3778) HRA 92 0,2

TRS [N/mm<sup>2</sup>]: 3700 Minimum

(ISO 3327/Type B)

K1C [MPa ](m)<sup>1/2</sup>] 9,6 Minimum

Porosity A<02 B<02

[ISO 4505]

Microstructure Homogenous, no eta-Phase, no free carbon

WC- Grain Size (FSSS) 0,55 μm

Classification K30/K40 US/Buick C2, (C10 + C5 Coated)

[ISO 513]

Ultra fine grade with maximum toughness and high hardness for rotating tools.